

# Prologue

Long, long ago, the world was embroiled in an era of chaos...

In the small kingdom of Hyrule, they tell of two golden triangles that harbor a mysterious force: the Triforce of Wisdom and the Triforce of Power.



One day, the kingdom was invaded by an army of demons lead by an evil tyrant called Ganon. Seeking to rule the world with fear and darkness, he stole the Triforce of Power!!

Just then, a boy appeared! He used his wits to throw the enemies into turmoil. Impa was saved!!



The name of the boy was Link. Once he heard Impa's tale, he decided that he would rescue Princess Zelda!! But, in order to oppose Ganon, who now held the Triforce of Power, Link would need to assemble the 8 pieces of the Triforce of Wisdom. If he could do that, surely...

he would be able to infiltrate Death Mountain, where...

THE HYRULE FANTASY

The Legend of Zelda  
Game TM

ゼルダの伝説

© 1986 Nintendo Co., Ltd.

LINK



A youth with a strong sense of justice who rose up to defeat Ganon. That's you, the player!

PRINCESS ZELDA



AQUAMENTUS



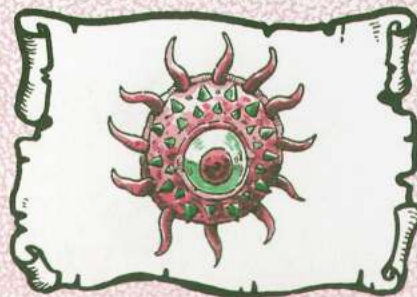
A dragon known as the one-horned beast. The boss of this underground labyrinth fires off beams!

GLEEOK



A dragon with 2-4 heads. Any heads Link lops off will fly around and attack him!

DIGDOGGER



A giant sea urchin monster. Due to its large size, it shrivels up when hit with shock waves, but its attack power is immense!

PATRA



An animal that cannot attack the player. It is defeated the same way as the other enemies.

OCTORO

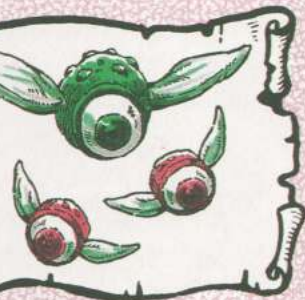


A land octopus. It attacks with its mouth!

TEKTITE



A



that attacks in groups. You  
 attack the real body until you've  
 the small ones!

## PEAHAT



its attack power is weak, but it can only  
 be defeated when standing still. It is  
 the incarnation of a fluttering flower!

## LYNEL



A species of centaur with the face of a  
 lion. Firing powerful swords, it is the  
 strongest foe found in the overworld.  
 The guardian deity of Death Mountain!

## DROK



octopus. It spits stones out of  
 its mouth!

## MOBLIN



This forest-dweller is a goblin with the  
 face of a bulldog. It attacks by throwing  
 its spear!

## ZORA



A merman that lives in the water. It raises  
 its head above the water's surface and  
 fires beams at Link. Bounce them back  
 with the Magical Shield!

## ARMOS



ITE

## FAIRY

**Z**elda, the kingdom's princess, feared the threat of Ganon's evil rule. She divided the Triforce of Wisdom into eight pieces, hiding them in different corners of the land. She then ordered her nursemaid, Impa, to escape and seek out a hero who would defeat Ganon!!



**U**pon discovering Zelda's plot, Ganon was enraged. He seized the princess and sent pursuers after Impa. The nursemaid desperately continued her flight, but at last she ran out of strength and found herself surrounded by Ganon's underlings!! Would this be the end...?!



he would be able to infiltrate Death Mountain, where the demon king made his home!!

**S**o begins our hero's adventurous journey in search of the Triforce. Will Link be able to defeat Ganon and save Princess Zelda...?!



Be able  
te Death  
where the  
ng made  
!!

in search  
at Ganon



The princess of this little kingdom has been captured by Ganon. She awaits Link's rescue in Death Mountain!

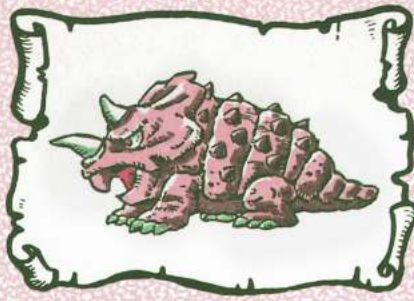
### GANON



The villain responsible for stealing the Triforce of Power and capturing the princess. This evil demon king seeks to rule the world with fear and darkness!

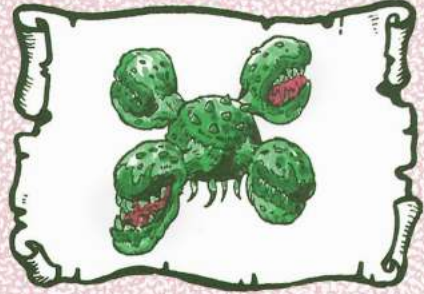
beast. The boss of this underground labyrinth fires off beams!

### DODONGO



A giant rhinoceros. Its offensive power isn't too strong, but its tough skin repels every attack!

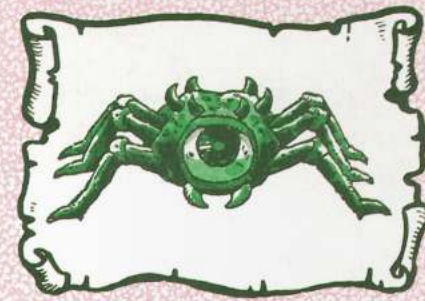
### MANHANDLA



A huge, four-armed Piranha Plant. The movements of this troublesome foe speed up every time it loses a limb to an attack!

shock waves, but its attack power is immense!

### GOHMA



A supersized crab that dwells in one of the labyrinths. It can't be defeated unless you use the weapon it's weak against!

### LANMOLA



A giant centipede monster. It moves quickly, wriggling around inside the labyrinth!

### TEKTITE



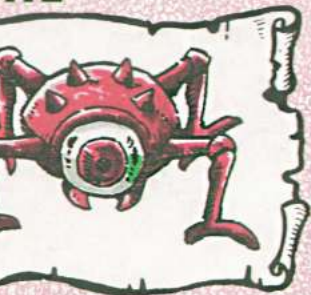
Jumps around a lot. It's rather underestimated!

### LEEVEE



Lives underground. It comes out of those who underestimate it because it can...

ITE



round and attacks with body  
t's rather weak, but don't  
imate it!

EVER



der ground, and sucks energy  
ose who come close. Beware,  
it can jump out at any time!



A soldier that has been turned to stone.  
It starts moving and attacks when Link  
touches it. There are fast-moving ones,  
too, so be extra carefull

GHINI



A ghost that dwells in the graveyard. Its  
attack power is high, as is its defense,  
so it can't be defeated by a single attack.  
Touching the gravestone will cause more  
to appear, but defeating the real one will  
make them vanish instantly!

FAIRY



These fairies live in fountains, and heal  
Link's hearts with a mysterious power.  
What an encouraging friend!

