

THE HYRULE FANTASY

# ゼルダの伝説

The Legend of Zelda  
Game

© 1986 Nintendo Co., Ltd.

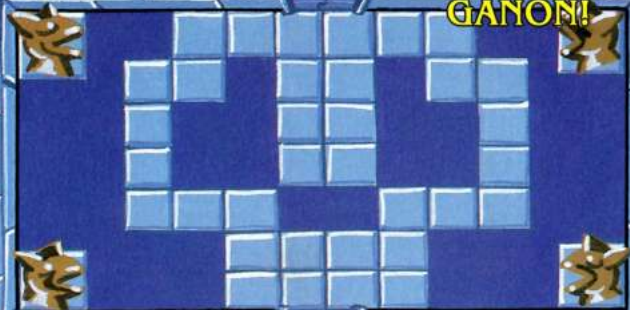


PEDDLER



DEATH MOUNTAIN THE DEMON KING

GANON!



Roll the die 4 times and take out the Magical Sword and the Silver Arrows!

OLD MAN








 the Letter, a Potion.	<p><b>DEATH MOUNTAIN ENTRANCE</b></p>  <p>Did you collect all the items?</p>				<p>Dead end.</p>	 If you have Triforce 2, obtain the White Sword.	<p>LE BA</p>
			<p>LADDER If you have Triforce 4, you can cross.</p> 				<p>Advance o</p>
<p>the Bracelet!</p> 			<p>LADDER If you have Triforce 4, you can cross.</p> 				
<p>an buy the</p>							

# OLD WOMAN



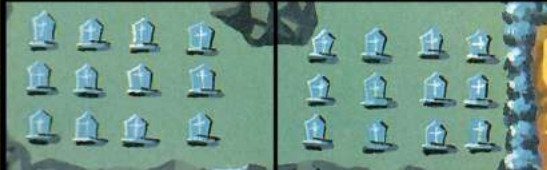
-  Food = 50 Rupees
-  Potion (Blue) = 50 Rupees
-  Potion (Red) = 100 Rupees
-  Magical Shield = 100 Rupees
-  Blue Ring = 250 Rupees

## Famicom Information

-  Place bombs to reveal caves.
-  Burn shrubs to reveal caves.
-  Touch an ARMOS to reveal stairs to the underground.
-  Push gravestones to reveal stairs to the underground.
-  Waterfalls conceal caves.

<p><b>LEVELS</b></p> <p><b>BATTLE!</b></p>			<p>Obtain the Letter.</p>	<p>Get 100 Rupees! (only once per player.)</p>
<p>Advance only one square.</p>	<p><b>WARP POINT</b></p>			<p><b>GAMBLE</b></p> <p>Roll the die. Even#: +50 Rupees Odd#: -50 Rupees</p>
				<p>Roll the die. If you roll 2 or 4, obtain a Blue Potion.</p>

↑ pieces 1 to 6, obtain the Magical Sword!



**LEVEL 7 BATTLE!**



Did you get the Magical Sword?

**FAIRY FOUNTAIN**

Heal your hearts!

You can buy Blue Ring & Fo








Roll an odd number on your next turn to advance.

←

Dead end.



If you have the Letter you can buy a Potion



**LEVEL 3 BATTLE!**



Did you get the White Sword?

can buy the  
ing & Food.

Triforce 4,  
you can cross.

**LEVEL 1  
BATTLE!**

**FAIRY FOUNTAIN**  
Heal your hearts!

**LEVEL 4  
BATTLE!**

**WARP POINT**

**RAFT**  
If you have  
Triforce 3,  
you can cross.

the Letter,  
a Potion!

**BATTLE!**

get the  
sword?

**START**

**WARP POINT**



or 4, obtain a Blue Potion.

**LEVEL 2**  
**BATTLE!**

A white-bordered box highlighting a battle area in the top-left corner of the map. It contains several small icons representing buildings and a central structure.

**RAFT**  
If you have  
Triforce 3,  
you can cross.

Dead end.

**LEVEL 8**  
**BATTLE!**

A white-bordered box highlighting a battle area in the lower-middle section of the map. It contains several small icons representing buildings and a central structure.

You can buy the  
Magical Shield.