

# Prologue

Long, long ago, the world was embroiled in an era of chaos...

In the small kingdom of Hyrule, they tell of two golden triangles that harbor a mysterious force: the Triforce of Wisdom and the Triforce of Power.



One day, the kingdom was invaded by an army of demons lead by an evil tyrant called Ganon. Seeking to rule the world with fear and darkness, he stole the Triforce of Power!!

Just then, a boy appeared! He used his wits to throw the enemies into turmoil. Impa was saved!!



The name of the boy was Link. Once he had heard Impa's tale, he decided that he would rescue Princess Zelda!! But, in order to oppose Ganon, who now held the Triforce of Power, he would need to assemble the 8 pieces of the Triforce of Wisdom. If he could do that, surely

he would be able to infiltrate Death Mountain, where the

**THE HYRULE FANTASY** The Legend of Zelda  
Game <sup>TM</sup>

**ゼルダの伝説** ゼム  
でん せつ

© 1986 Nintendo Co., Ltd.

**LINK**



A youth with a strong sense of justice who rose up to defeat Ganon. That's you, the player!

**PRINCESS ZELDA**



**AQUAMENTUS**



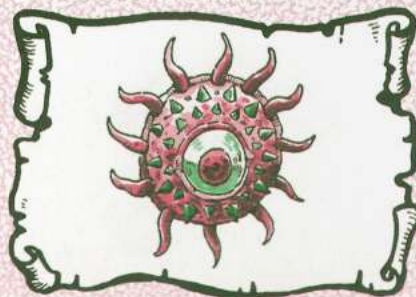
A dragon known as the one-horned beast. The boss of this underground labyrinth fires off beams!

**GLEEOK**



A dragon with 2-4 heads. Any heads Link lops off will fly around and attack him!

**DIGDOGGER**



A giant sea urchin monster. Due to its large size, it shrivels up when hit with shock waves, but its attack power is immense!

**PATRO**



An animal that cannot attack. It is defeated by Link.

**OCTO**

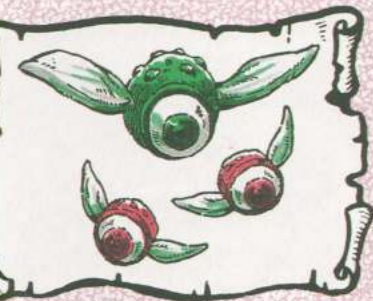


A land octopus that can open its mouth.

**TEKT**



## ATRA



animal that attacks in groups. You cannot attack the real body until you've defeated the small ones!

## PEAHAT



Its attack power is weak, but it can only be defeated when standing still. It is the incarnation of a fluttering flower!

## LYNEL



A species of centaur with the face of a lion. Firing powerful swords, it is the strongest foe found in the overworld. The guardian deity of Death Mountain!

## CTOROK



and octopus. It spits stones out of its mouth!

## MOBLIN



This forest-dweller is a goblin with the face of a bulldog. It attacks by throwing its spear!

## ZORA



A merman that lives in the water. It raises its head above the water's surface and fires beams at Link. Bounce them back with the Magical Shield!

## EKTITE



## ARMOS



## FAIRY

**Z**elda, the kingdom's princess, feared the threat of Ganon's evil rule. She divided the Triforce of Wisdom into eight pieces, hiding them in different corners of the land. She then ordered her nursemaid, Impa, to escape and seek out a hero who would defeat Ganon!!



he would be able to infiltrate Death Mountain, where the demon king made his home!!

**S**o begins our hero's adventurous journey in search of the Triforce. Will Link be able to defeat Ganon and save Princess Zelda...?!

**U**pon discovering Zelda's plot, Ganon was enraged. He seized the princess and sent pursuers after Impa. The nursemaid desperately continued her flight, but at last she ran out of strength and found herself surrounded by Ganon's underlings!! Would this be the end...?!





The princess of this little kingdom has been captured by Ganon. She awaits Link's rescue in Death Mountain!

## GANON



The villain responsible for stealing the Triforce of Power and capturing the princess. This evil demon king seeks to rule the world with fear and darkness!

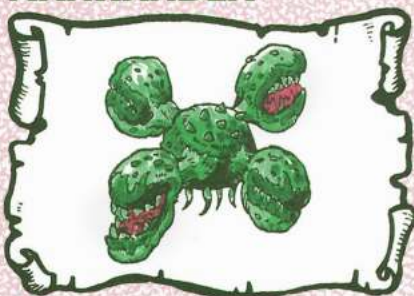
beast. The boss of this underground labyrinth fires off beams!

## DODONGO



A giant rhinoceros. Its offensive power isn't too strong, but its tough skin repels every attack!

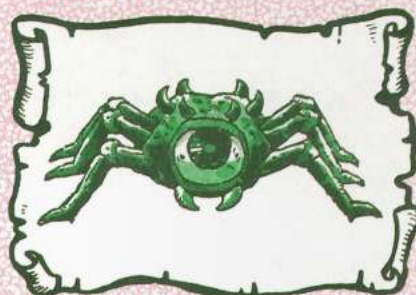
## MANHANDLA



A huge, four-armed Piranha Plant. The movements of this troublesome foe speed up every time it loses a limb to an attack!

shock waves, but its attack power is immense!

## GOHMA



A supersized crab that dwells in one of the labyrinths. It can't be defeated unless you use the weapon it's weak against!

## LANMOLA



A giant centipede monster. It moves quickly, wriggling around inside the labyrinth!

TEK...



Jumps and slams. Its understi...

LE...



Lives and out of the because i...

## EKTITE



It jumps around and attacks with body  
limbs. It's rather weak, but don't  
underestimate it!



A soldier that has been turned to stone.  
It starts moving and attacks when Link  
touches it. There are fast-moving ones,  
too, so be extra careful!

## FAIRY



These fairies live in fountains, and heal  
Link's hearts with a mysterious power.  
What an encouraging friend!

## LEEVEER



It lives under ground, and sucks energy  
out of those who come close. Beware,  
because it can jump out at any time!

## GHINI



A ghost that dwells in the graveyard. Its  
attack power is high, as is its defense,  
so it can't be defeated by a single attack.  
Touching the gravestone will cause more  
to appear, but defeating the real one will  
make them vanish instantly!

